

QUICK GUIDE

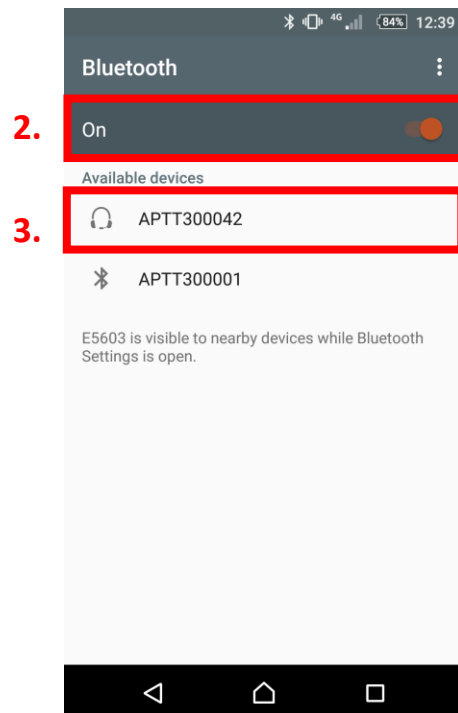
Connecting your PTT Voice Responder to Team on the Run / Team on Mission (Android) (EN)



A

Pairing your PTT Voice Responder with your smartphone via Bluetooth

1. Turn on your PTT Voice Responder by holding down the Power button for more than 3 seconds. After it is on, a blinking green light will indicate that the device is ready for pairing.
2. Turn on your smartphone's Bluetooth by going to: Settings → Bluetooth → Turn on.
3. Pair your PTT Voice Responder to your smartphone by selecting it from the 'Available devices' list. To know which device to select from the list, check the unique friendly name on the back of your Voice Responder. Once it has successfully paired, a blue light will begin blinking on your device.



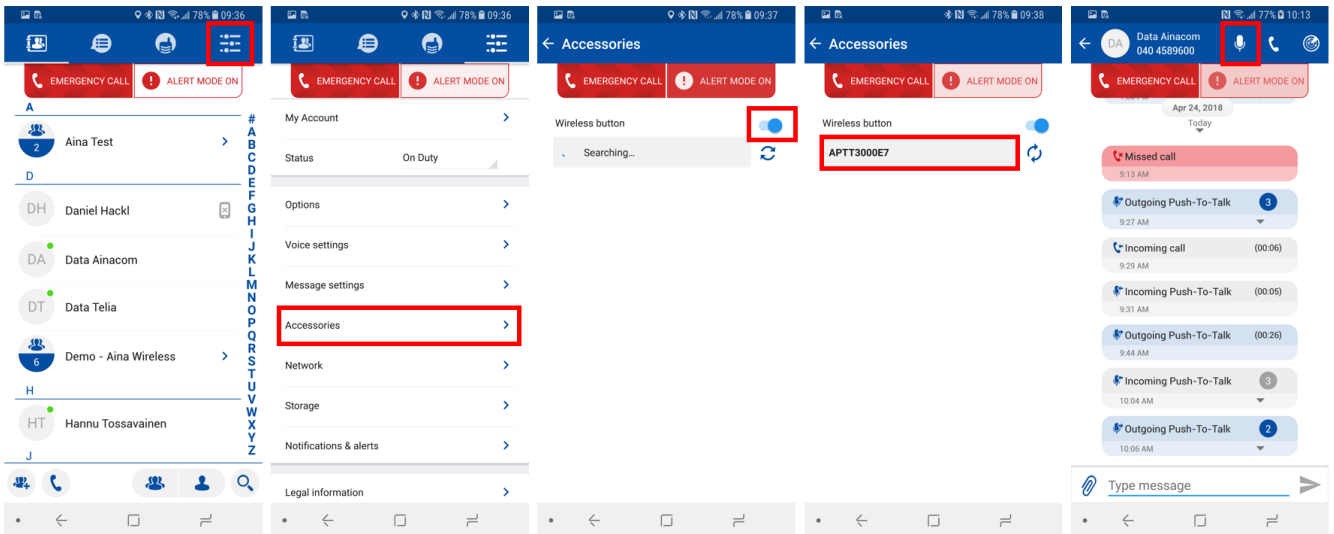
NOTE: The Voice Responder can only be paired with one device at a time. If you want to pair it to another device you need to perform an **Unpairing/ Software reset** by pressing and holding both arrow buttons and both PTT buttons simultaneously, until the LED turns off.



B

Connecting your PTT Voice Responder to Team on the Run / Team on Mission

1. Select the settings tab on the top right corner
2. Select 'Accessories' from the menu
3. Turn on the 'Wireless button' feature
4. Select your AINA accessory from the list
5. To make a PTT call, simply select a contact/group from the contacts menu and press on the microphone icon on the top right corner



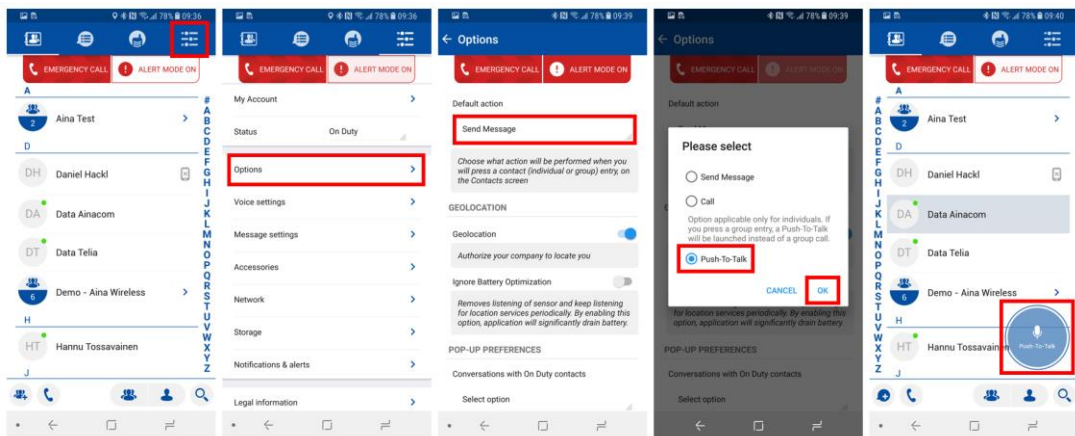
For more information on how to use the StreamWIDE applications please visit their website:
www.streamwide.com



Additional features

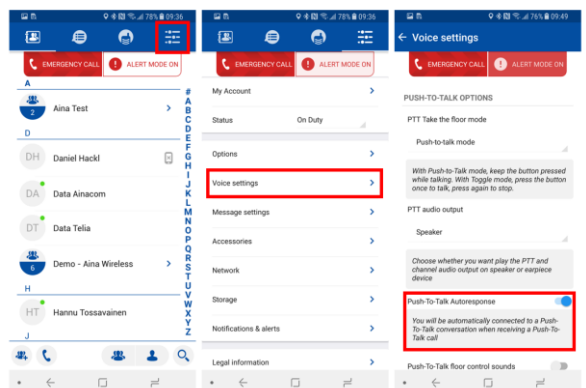
To launch the PTT call function quicker:

1. Select the settings tab on the top right corner
2. Select 'Options' from the menu
3. Select the existing 'Default action'
4. Change this to 'Push-to-Talk' and select 'OK'
5. Now, when you select a contact(s), a Push-to-Talk icon will appear from which you can start the PTT call straight away



To automatically respond to PTT calls:

1. Select the settings tab on the top right corner
2. Select 'Voice settings' from the menu
3. Turn on 'Push-to-Talk Autoresponse'
4. Now, when you receive a PTT call, it will automatically connect to it



For more information on how to use the StreamWIDE applications please visit their website:
www.streamwide.com



AINA PTT Voice Responder's main button functions when connected to the application



Button	Function
Power ON/ OFF	Press for more than 3 seconds to turn the device on/off.
Primary PTT	Press and hold to speak. Release when you are done.
Multifunction (Answer / end call)	Press to accept and end PTT calls.

Visit www.aina-wireless.com to find additional accessories, an extended user manual of the AINA PTT Voice Responder and more user guides. If you have any further questions, you can also email us at: sales@aina-wireless.com

