

QUICK GUIDE

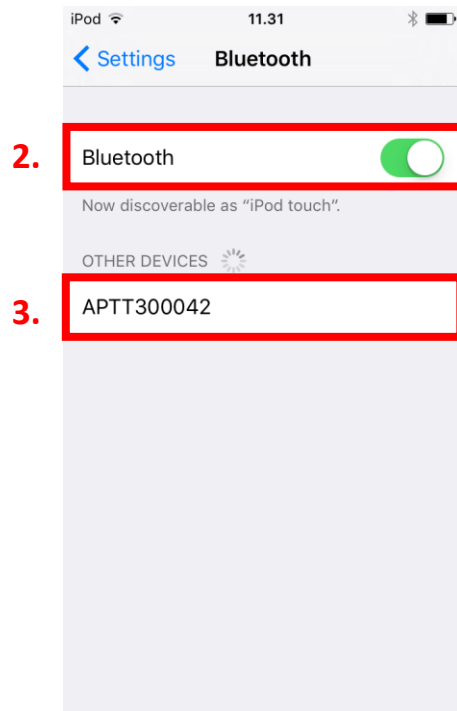
Connecting your PTT Voice Responder
to Zello (iOS) (EN)



A

Pairing your PTT Voice Responder with your iPhone via Bluetooth

1. Turn on your PTT Voice Responder by holding down the Power button for more than 3 seconds. After it is on, a blinking green light will indicate that the device is ready for pairing*.
2. Turn on your iPhone's Bluetooth by going to: Settings → Bluetooth → Turn on.
3. Pair your PTT Voice Responder to your iPhone by selecting it from the Devices list. To know which device to select from the list, check the unique MAC-address on the back of your Voice Responder. Once it has successfully paired, a blue light will begin blinking on your device.



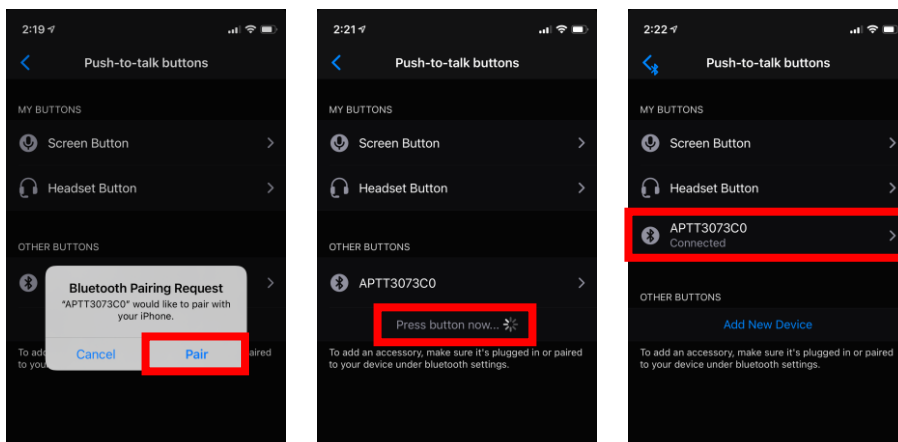
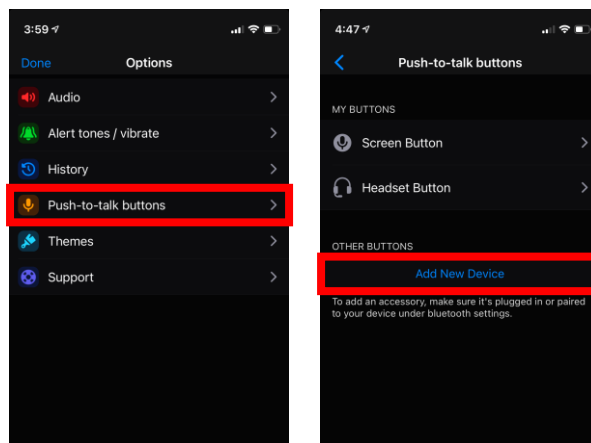
***NOTE:** The Voice Responder can only be paired with one device at a time. If you want to pair it to another device you need to perform an **Unpairing/ Software reset** by pressing simultaneously both arrow buttons and both PTT buttons until the device beeps twice and the LED turns off.



B

Connecting your PTT Voice Responder to Zello

1. In the Zello application, go to Options and select 'Push-to-talk buttons'.
2. Click on 'Add New Device'.
3. Accept the Bluetooth Pairing request.
4. Press the PTT1 button on your PTT Voice Responder.
5. Your PTT Voice Responder is connected to the Zello application when it appears on the 'My Buttons' list.



If you cannot find your PTT Voice Responder from the list, make sure that your Voice Responder is still connected to your iPhone via Bluetooth (the LED should be blinking in blue). If it is not, perform part A again.



C

Functions available

PTT1 button – Press and hold to speak to chosen contact/channel. Release when you are done.

PTT2 button - Press and hold to communicate with a pre-assigned contact/ channel. Assign the PTT2 button by selecting a user or channel on Zello, and press both PTT buttons simultaneously. A confirmation message will appear saying: “PTT button mapped to [contact/channel]”.

Emergency button – Press to send a call alert to a pre-assigned contact/channel. Assign the emergency button by selecting a user or channel on Zello, and press both the emergency and PTT1 button simultaneously.

Arrow buttons – Press either arrow button to change contact/channel.

Visit www.ainaptt.com to find additional accessories, an extended user manual of the AINA PTT Voice Responder and more user guides. If you have any further questions, you can also email us at:
sales@ainaptt.com

